

AMX Systems at Light Speed

Automate your AMX conference room or classroom in less than an hour with Rapid Project Maker (RPM).

A typical AV installation can require several days of programming time, consuming your AV budget and leading to unreliable systems.

Welcome to the revolutionary world of RPM, where time-consuming programming is a thing of the past.



RPM is a Cloud-based configuration tool that allows your AV and IT support teams to easily configure an AMX system by using a step-by-step wizard-based approach. RPM simplifies more than just the configuration – it is a comprehensive tool designed to help throughout the process, from start to finish.

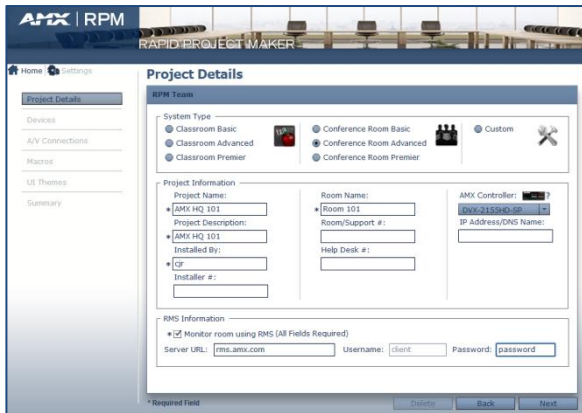
With no programming required, you can configure the project, create a user interface and generate step-by-step instructions on how to install the system. You can store your projects on AMX.com, allowing technicians to access and manage them from anywhere. When it's time to make a change to the system, such as adding or changing out a device, you can modify your existing configuration and implement the change immediately – with no costly re-programming.

WITHOUT RPM	WITH RPM
Automating a conference room is:	Automating a conference room is:
Difficult. Requires extensive programming skills.	Simple. No programming or sophisticated technical knowledge required.
Time Consuming. Takes days or weeks to program a system.	Fast. Set up a complete system in an hour or less that works perfectly from the start.
Expensive. Programming costs can consume a budget.	Affordable. RPM is free and eliminates expensive programming and integration costs.
Unreliable. Complex programming can lead to unreliable installations.	Rock-Solid. RPM system designs and code are tested and backed by AMX.
Inconsistent. Complex programming is hard to replicate.	Easy to Duplicate. Projects are saved to the AMX Cloud and can be duplicated to any number of similar rooms.

To learn more about RPM and get your free login ID and password, please visit AMX's RPM Portal at www.amxrpm.com.

RAPID PROJECT MAKER (RPM) FROM AMX

Application Overview



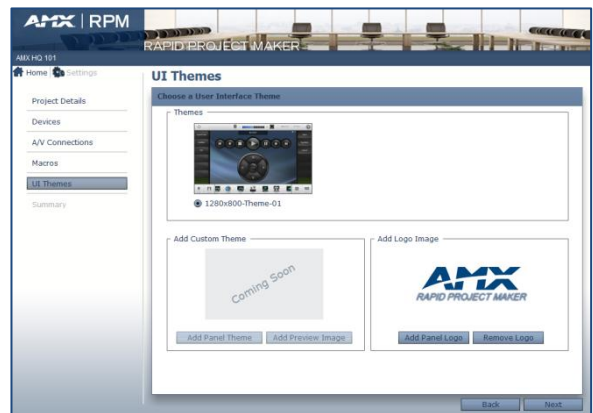
1. Start by entering your project details including project name and description. Then, select a master controller.



4. Create activity macros for your system. You can add devices and functions for one-touch simplicity.



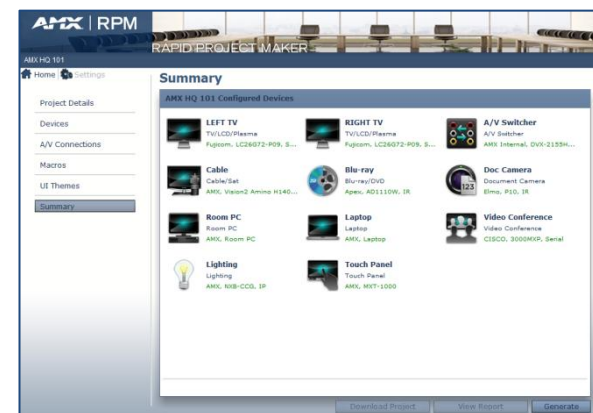
2. Next, add the devices you wish to include in your project. This may include controllable and uncontrolled devices, along with AMX keypads.



5. Choose a theme you would like to display on your completed system control panel.



3. Select source devices and their destination to route audio and video to the desired input or output on the A/V switcher. You can also bypass the switcher by assigning a device to connect directly to a display.



6. Click "Generate" to complete the project and generate a downloadable package of files and/or to view a final system report. Your system is ready to deploy!