

Overview

Design, configure and deploy AMX systems in less than an hour with Rapid Project Maker (RPM).

RPM is a cloud-based configuration tool that allows AV technicians or IT professionals to easily configure an AMX system by using a step-by-step wizard-based approach. RPM simplifies more than just the configuration - it is a comprehensive tool designed to help throughout the process, from start to finish. With no programming required, the user can configure the project, create a user interface and generate step-by-step instructions on how to install the system.

Users can store their projects on AMX.com, allowing installers to access and manage them from anywhere.



FIG. 1 RPM - Example Summary Page

Supported Web Browsers

RPM is supported on the following web browsers:

Supported Web Browsers	
Windows	Macintosh/Apple
Internet Explorer v8	Safari v4
Mozilla Firefox v3	Mozilla Firefox v3
Google Chrome v9	Google Chrome v9

RPM System Limitations

RPM is intended to assist in the creation of small to medium-sized control systems with a single NetLinX Controller and a limited number of controlled devices.

The fundamental limitation of any RPM system is simply the device types and specific numbers of devices supported in the RPM user interface.

Systems that require more complex design (including multiple controllers, custom device control and extensive custom touch panel design) may not be appropriate for RPM.

Related AMX Software - RPMLoader

RPMLoader is a stand-alone application that transfers RPM project files to a target AMX Controller. RPMLoader is installed on your PC via the **Download RPMLoader** command button in RPM (accessible via the **Summary** page).

Refer to the RPMLoader on-line help and Operation/Reference Guide for details.

Supported Devices

RPM - Supported Devices		
Device Type	Max Supported	Control Method
A/V Switcher (up to 12 x 12)	1	IP, RS232
Aux Sources	6	User Interface
Cable, Satellite or TV tuner	2	IP, RS232, IR* (see Notes)
DVD Player	2	IP, RS232, IR* (see Notes)
DVR Recorder	2	IP, RS232, IR* (see Notes)
Document Camera	2	IP, RS232, IR* (see Notes)
Laptop	6	User Interface
Room PC	2	User Interface
TV/LCD/Plasma Display	4	IP, RS232
Touch Panel	1	User Interface
VCR	2	IP, RS232, IR* (see Notes)
Video Conference	1	IP, RS232
Camera (through VTC)	2	Controlled through VTC
Video Projector	4	IP, RS232
Keypads (Metreau & Novara)	2	AxLink

RPM - Supported Devices (Cont.)		
Device Type	Max Supported	Control Method
Lighting System	1	IP, RS232
Shades/Blinds/Curtains	2	Up to 3 x relay ports (open, close, stop)
Motorized Screen	4	Up to 3 x relay ports (up, down, stop)
Projector Lift	4	Up to 2 x relay ports (up, down, stop)
Audio Conference/Mixer** (see Notes)	1	IP, RS232
PDU Power Distribution Unit	Coming soon!	Coming soon!

Notes:
 * IR controlled devices do not provide feedback.
 ** The Audio Conference/Mixer device type requires a configuration file that must be transferred to the device, in order to support RPM functionality. A link to this configuration file is provided in the RPM project report (only if a Audio Conference/Mixer device is included in your RPM project). Refer to the device manufacturer's documentation for instructions on downloading a file to the device.

Supported AMX Controllers, Touch Panels and Accessories

RPM supports the following AMX NetLinX Controllers and Touch Panels:

AMX Controllers	Master Firmware version:
<ul style="list-style-type: none"> DVX-3150HD-SP DVX-2150HD-SP DVX-2150HD-T DVX-2155D-SP DVX-2155D-T DVX-3155HD-SP DVX-3155HD-T DVX-3150HD-T 	4.3 (or higher)
<ul style="list-style-type: none"> DVX-2100HD 	4.1 (or higher)
<ul style="list-style-type: none"> NI-4100 NI-3101-SIG NI-3100 NI-2100 NI-900 NI-700 	3.6 (or higher)

AMX Touch Panels

<ul style="list-style-type: none"> MXT-2000XL-PAN MXD-2000XL-PAN MXT-1900L-PAN MXD-1900L-PAN MXT-1000 MXD-1000 MXT-700 MXD-700 	<ul style="list-style-type: none"> NXT-CV7 NXT-CV10 NXV-300 NXD-500i NXD-700vi NXD-1000vi 	<ul style="list-style-type: none"> MVP-5150 MVP-5200i MVP-9000i
--	---	--

AMX Accessories

<ul style="list-style-type: none"> EXB-IRS4 EXB-COM2 EXB-REL8 MXA-MP MXA-MPL 	<ul style="list-style-type: none"> NXB-CCG AVB-RX-DXLINK-HDMI AVB-TX-MULTI-DXLINK AVB-WP-TX-MULTI-DXLINK CCD-OCRB-P
---	--

Supported Controlled Devices

RPM supports devices that have RPM-compatible Duet modules.

To search for RPM-compatible devices at www.amx.com:

- Go to www.amx.com and click on the **TECH CENTER** link at the top of the page (FIG. 2):



FIG. 2 www.amx.com - TECH CENTER link

- In the Navigation menu (left side of page), click on **Search Third Party Devices** (FIG. 3):



FIG. 3 www.amx.com (Tech Center) - Search Third Party Devices

- In the **Search Devices** page, fill in the search criteria as desired and click **Search** to generate a listing of third-party devices.
- Click the **RPM Compatible** option to filter the results to show only RPM Compatible Duet Modules. Note that this selection automatically selects the **Has Duet Module** option (FIG. 4):

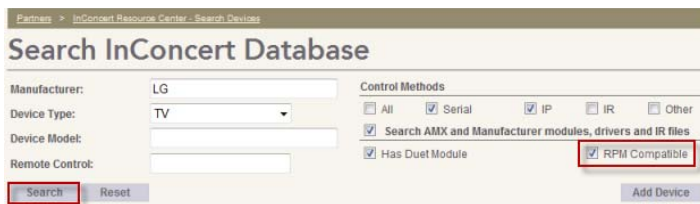


FIG. 4 Search InConcert Database with "RPM Compatible" option selected

- Click **Search** to search the InConcert database for RPM compatible Duet Modules, based on the search criteria. The results are displayed below the search fields (FIG. 5):

Manufacturer	Device Type	Model	Last Update	Files Available
LG Electronics	TV	19LD350	May 13 2010	DM
LG Electronics	TV	19LH20	Apr 21 2010	DM
LG Electronics	TV	19LU55	Apr 21 2010	DM
LG Electronics	TV	19LV2500	Oct 9 2012	DM
LG Electronics	TV	20LS7D	Mar 23 2012	DM
LG Electronics	TV	20LS7DC	Mar 23 2012	DM
LG Electronics	TV	22LD350	May 13 2010	DM

FIG. 5 InConcert Database - Search Results

- Click the desired **Model** link to open the *File(s) To Download* page for the selected device. This page indicates all files that are available to download for this device. The **RMS** icon in the Device Details page indicates whether the Duet module for this device is RPM-compatible (FIG. 6):

File Name	Bundle Version	Application	Type	Properties
LG Electronics-TV-19LD350.xml			DCS	
LG_22LD350_Comm_drt_0_0.jar	1.0.0		JAR FILE	
LG_22LD350_vt_0_0_dir1_0_0.zip	1.0.0	5/13/2010 12:00:00 AM	DUET MODULE	

FIG. 6 Example Device Details page with RPM icon

Note: Only RPM-compatible modules are appropriate for use with RPM.

Getting Started - Creating a New Project

The RPM Web Application is available for AMX Dealers at rpm.amx.com. RPM is designed to be easy and quick - the basic workflow for creating a new project in RPM is:

- Launch the RPM Rapid Project Maker web application: In a supported browser, go to rpm.amx.com and log in using your RPM login credentials (FIG. 7):

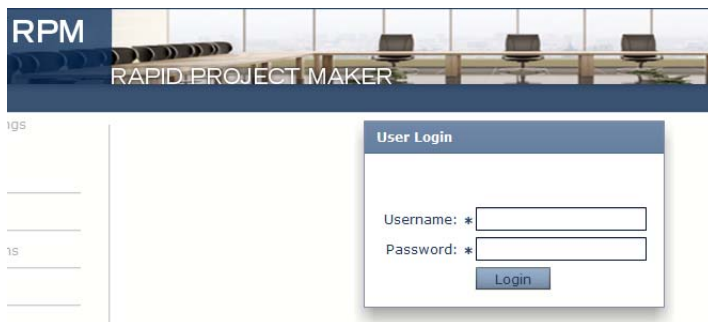


FIG. 7 rpm.amx.com - Login page

Note: All requests for RPM access should go through the AMX Sales Manager responsible for the account that is requesting access.

- Click the **Add Project** button in the upper-right corner of the Home page (FIG. 8):



FIG. 8 Home Page - Add Project button

- Following the on-screen directions to select devices, configure applicable A/V connections, create macros and select a UI template. Click **Next** on each page to proceed through the RPM wizard until the *Summary* page is presented.

- Use the command buttons presented along the bottom of the *Summary* page to generate the RPM Project and transfer it to the target AMX Controller (FIG. 9). Note that initially, only the **Generate** command button is enabled

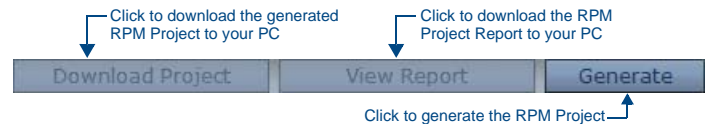


FIG. 9 RPM Command Buttons (Summary page)

- Click **Generate** to generate the RPM Project. Once the project has been generated, the *Download Project* and *View Report* options are enabled.
 - Click **Download Project** to download the RPM Project to your PC.
 - Click **View Report** to download a report that summarizes the RPM Project to your PC.
- Click the **Download RPMLoader** command button on the right-side of the application window to install the *RPMLoader* application (FIG. 10). *RPMLoader* is a stand-alone application that transfers RPM project files to a target AMX Controller.

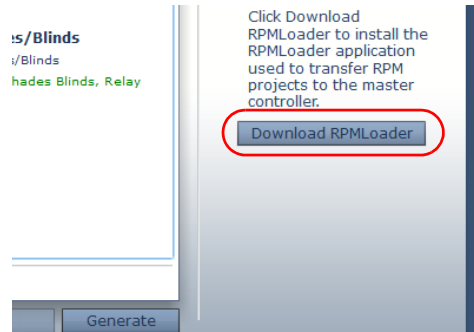


FIG. 10 RPM Summary Page - Download RPMLoader command button

- Open the downloaded RPM Project in the *RPMLoader* application and click **Start File Transfers** to transfer the RPM Project files to the AMX Controller.

Opening an Existing RPM Project

Once a RPM Project has been started (or completed), it is added to the list of RPM Projects in the Home page (FIG. 11):

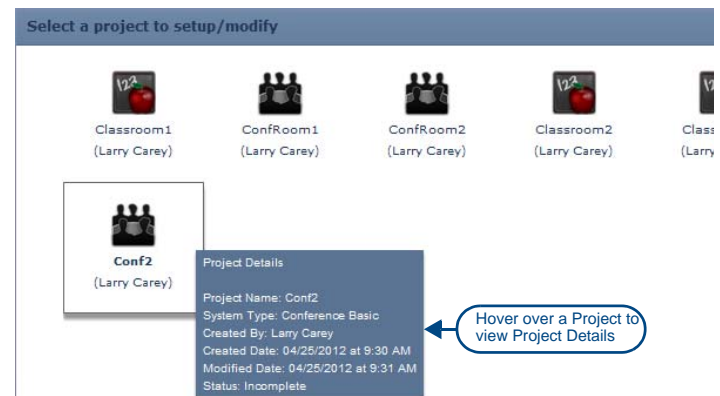


FIG. 11 RPM Projects represented in the Home page

Note: Once all required fields in the *Project Details* page have been filled in, click **Next** to proceed to the *Devices* page. At this point, the *Project* is added to the *Home* page. Use the **Search By** drop-down menus to filter the view as desired:

- Select a criteria type from the first drop-down, and select a secondary criteria in the second.

For example, if "Created Date" is selected in the first menu, then several date-oriented options are available in the second menu (FIG. 12):



FIG. 12 Search By Drop-Down Menu

- The *Project Name* search criteria type requires text input.
- Note that the application does not support wildcard (*) searches.
- Click **Find** to filter the Project list according to the search criteria.

For full warranty information, refer to the AMX Instruction Manual(s) associated with your Product(s).